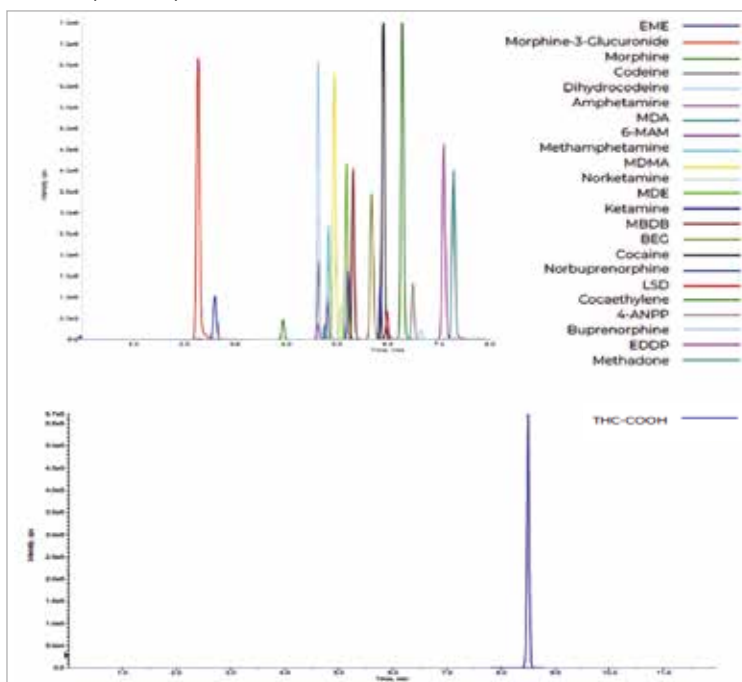


SHORT METHOD DESCRIPTION

FloMass® Drugs of Abuse in Urine

Our panel of drug of abuse in urine includes: Amphetamine, Methamphetamine, MDA, MDE, MDMA, MBDB, Cocaine, Benzoylcegonine, Ecgoninmethylester, Coca ethylene, Morphine, Morphine 3-Glucuronate, 6-MAM, Codeine, Dihydrocodeine, THC-COOH, Methadone, EDDP, Buprenorphine, Norbuprenorphine, Ketamine, Norketamine, 4-ANPP and LSD.



Performance

Analyte	Linearity (ng/mL)	LLOD (ng/mL)	LLOQ (ng/mL)	Analyte	Linearity (ng/mL)	LLOD (ng/mL)	LLOQ (ng/mL)
Amphetamine	3.77 - 3552	1.13	3.77	Codeine	3.29 - 851	0.986	3.29
Methamphetamine	3.55 - 3412	1.07	3.55	Dihydrocodeine	3.31 - 782	0.992	3.31
MDA	3.08 - 3360	0.925	3.08	6-MAM	0.531 - 278	0.159	0.531
MDE	3.03 - 1630	0.910	3.03	Methadone	1.90 - 759	0.569	1.90
MDMA	2.58 - 1746	0.775	2.58	EDDP	2.15 - 814	0.646	2.15
MBDB	2.19 - 759	0.656	2.19	Buprenorphine	0.278 - 355	0.083	0.278
Cocaine	2.85 - 3012	0.856	2.85	Norbuprenorphine	0.205 - 327	0.061	0.205
BEC	2.55 - 1506	0.765	2.55	Ketamine	2.32 - 825	0.695	2.32
EME	2.55 - 2220	0.766	2.55	Norketamine	2.15 - 1868	0.645	2.15
Coca Ethylene	2.29 - 2332	0.688	2.29	4-ANPP	0.040 - 33.0	0.012	0.040
Morphine	2.61 - 3952	0.782	2.61	LSD	0.008 - 33.3	0.002	0.008
Morphine-3-Glucuronate	2.16 - 900	0.649	2.16	THC-COOH	0.572 - 864	0.172	0.572

ORDERING GUIDE

Order No.	Description	Quantity
EUM02100	FloMass® Drug of Abuse in Urine (Amphetamine, Methamphetamine, MDA, MDE, MDMA, MBDB, Cocaine, Benzoyllecgonine, Ecgoninmethylester, Coca ethylene, Morphine, Morphine 3-Glucuronate, 6-MAM, Codeine, Dihydrocodeine, THC-COOH, Methadone, EDDP, Buprenorphine, Norbuprenorphine, Ketamine, Norketamine, 4-ANPP and LSD) LC-MS/MS detection	100 assays
	Contents	
	Mobile Phase A	1 x EUM02011
	Mobile Phase B	1 x EUM02012
	Mobile Phase C	1 x EUM02013
	Buffer Solution	1 x EUM02021
	Precipitant Solution	1 x EUM02022
	Hydrolysis Solution	1 x EUM02023
	Diluting Solution	1 x EUM02025
	Internal Standard Mix	1 x EUM02031
	Separately available components	
EUM02011	Mobile Phase A	600 ml
EUM02012	Mobile Phase B	500 ml
EUM02013	Mobile Phase C	500 ml
EUM02021	Buffer Solution	6.5 ml
EUM02022	Precipitant Solution	32 ml
EUM02023	Hydrolysis Solution	1 ml
EUM02025	Diluting Solution	12 ml
EUM02031	Internal Standard Mix	2x0.8 ml
	Accessory	
EUM00C02	Analytical Column with test chromatogram	1 pc
EUM00A04	Precolumns	4 pcs
EUM00A05	Holder (incl. 1 precolumn)	1 pc
EUM02071	FloTuning Mix A + Mix B DOA	2x2 ml
EUM02055	Control Set for Drug of Abuse in Urine, lyoph. (2 levels)	3x2x0.6 ml
EUM02042	Calibrator Set for Drug of Abuse in Urine, lyoph. (6 levels)	3x6x0.6 ml

HPLC-MS/MS system conditions

Ionization: ESI positive mode, except for THC-COOH analyzed in negative mode

MS/MS: specific MRM

Injection volume: 15 µl (variable according to instrumental sensitivity)

Running time: 12 min

Column heater: 40°C